

# UPHOLSTERY 9804 FLORA



5011 **Red**



5030 **Butterscotch**



5050 **Oyster**



5020 **Redwood**



5061 **Sage**



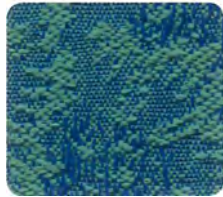
5063 **Bluebell**



5012 **Fandango**



5013 **Chocolate**



5102 **Riviera**



5071 **Geranium**

# UPHOLSTERY 4856 INTUITION



1724 **Admiral**



1712 **Charcoal**



1723 **Viridian**



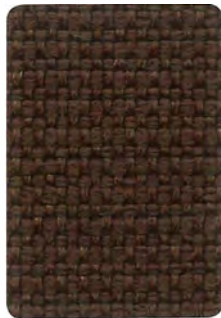
1713 **Sand**



1719 **Slate**



1714 **Coral**



1715 **Hickory**

## Upholstery Specifications

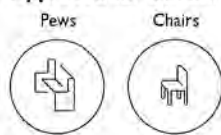
Style	9804 Flora*	4856 Intuition
<b>Contents</b>	36% post-consumer recycled polyester 64% nylon	55% post-consumer recycled polyester 34% pre-consumer recycled polyester 11% polyester
<b>Weight</b>	9.8 ± 1.0 oz./lin. yd.	11.2 ± 1.0 oz./lin. yd
<b>Width</b>	54" min. useable	54" min. useable
<b>Repeat</b>	1.68" vertical and horizontal	none
<b>Backing</b>	SBR backcoating	acrylic backcoating
<b>Treatment</b>	BLOCKaide® stain repellent	stain repellent
<b>Cleaning Code</b>	W-S	W-S
	Clean with water-based cleaning agents, foam or pure, water-free solvents. Vacuuming or light brushing is recommended to prevent dust and soil buildup.	Standard Care Label W-S. Clean with water based cleaning agents, foam or pure, water free solvents. Vacuuming or light brushing is recommended to prevent dust and soil buildup.
<b>Performance</b>		
<b>Breaking strength (ASTM D5034)</b>	100 lbf min. warp and 150 lbf min. fill	210 lbf min. warp and 200 lbf min. fill
<b>Tear (ASTM D2261)</b>	7 lbf min. warp and 10 lbf min. fill	65 lbf min. warp and 55 lbf min. fill
<b>Seam Slippage (ASTM D4034)</b>	40 lbf min. warp and fill	30 lbf warp and 45 lbf fill
<b>Pilling resistance (ASTM D3511)</b>	Class 4 min.	Class 4 min.
<b>Colorfastness to light (AATCC 16.3 Option 3)</b>	Grade 4 min. at 40 hours	Grade 4 min. at 40 hours
<b>Colorfastness to crocking (AATCC 8)</b>	Grade 4 min. dry, Grade 3 min. wet	Grade 4 min. dry, Grade 3 min. wet
<b>Abrasion resistance (ASTM D4157)</b>	60,000 double rubs min. - cotton duck	100,000 double rubs - cotton duck
<b>Flammability</b>		
<b>CA Technical Bulletin 117-2013 Section I</b>	Passes	Passes
<b>UFAC</b>	Class I	Class I
<b>NFPA 260</b>	Class I	Class I

Please do not use for shade master. Colors may vary between dye lots. These are directional fabrics. Application testing of these products is recommended. Every effort has been made to ensure color accuracy of the digital images, however, please order a sample before specification. Proudly woven in North America supporting our local communities.



Sauder® Manufacturing Co.  
930 W. Barre Rd.  
PO Box 230  
Archbold, Ohio 43502  
P: 800.537.1530  
F: 419.446.4945  
sauderworship.com

### Approved for use on:



\* Flora also approved for auditorium.